

City of Byram

Redistricting Presentation

January 19, 2012

BRIDGE & WATSON, INC.

URBAN AND REGIONAL PLANNING CONSULTANTS AND LAND PLANNERS

608 McLarty Road
Post Office Box 1482
Oxford, MS 38655

TEL. (662) 234 - 0958

FAX (662) 234 - 0997

MAILBOX@PLANNING-CONSULTANTS.COM

What is Redistricting, or Districting in the Case of the City of Byram?

- **Establishing election districts is the process of geographically dividing the city into six election districts (or wards) so that the population is approximately equal among the districts.**
- **Aldermen are then elected from within each ward. The Mayor and Alderman At-large are elected citywide.**

Why Establish Districts?

- State law requires Byram to be divided into election districts:

In code charter municipalities having a population of ten thousand, or more, there shall be:

- Seven Aldermen
 - Six Wards (one alderman elected from each)
 - One Alderman elected at large
 - One Mayor elected at large
- Voting precincts and polling places can be as numerous or few as necessary to conduct elections. Polling places do not have to be within the precinct.

Why Must Wards be Approximately Equal in Population?

- State and Federal Constitution provides for equal representation. Commonly known as the **One Person, One Vote** rule.
- The law does not require mathematical exactness. A top to bottom deviation of less than 10% is considered acceptable.

Hypothetical Example of Imbalanced Wards

Ward	Population	Ideal Pop.	Numerical Deviation	Percent Deviation
1	1,542	1,915	-373	-19.5%
2	2,478	1,915	563	29.4%
3	1,300	1,915	-615	-32.1%
4	2,169	1,915	254	13.3%
5	2,641	1,915	726	37.9%
6	1,359	1,915	-556	-29.0%
Total	<u>11,489</u>			
			Deviation =	70.0%

The numbers above for each ward are completely hypothetical. No analysis has occurred.

Hypothetical Example of Balanced Wards

Ward	Population	Ideal Pop.	Numerical Deviation	Percent Deviation
1	1,900	1,915	-15	-0.8%
2	1,953	1,915	38	2.0%
3	1,895	1,915	-20	-1.0%
4	1,926	1,915	11	0.6%
5	1,938	1,915	23	1.2%
6	1,877	1,915	-38	-2.0%
Total	<u>11,489</u>			
			Deviation =	4.0%

The numbers above for each ward are completely hypothetical. No analysis has occurred.

Population Change 2000 – 2010

All Persons

<u>Persons</u>	<u>2000</u>	<u>%</u>	<u>2010</u>	<u>%</u>	<u>#</u> <u>Change</u>	<u>%</u> <u>Change</u>
White	5,251	88.9%	5,247	45.7%	(4)	-0.1%
Black	587	9.9%	5,990	52.1%	5,403	920.4%
Other	71	1.2%	252	2.2%	181	254.9%
Total	<u>5,909</u>		<u>11,489</u>		<u>5,580</u>	<u>94.4%</u>

Data based on Census 2000 and 2010 (Public Law 94-17) Summary File - Mississippi;

Population Change 2000 – 2010

Voting Age Population

<u>Persons</u>	<u>2000</u>	<u>%</u>	<u>2010</u>	<u>%</u>	<u>#</u> <u>Change</u>	<u>%</u> <u>Change</u>
White	3,883	89.6%	4,068	49.9%	185	4.8%
Black	401	9.3%	3,921	48.1%	3,520	877.8%
Other	49	1.1%	156	1.9%	107	218.4%
Total	<u>4,333</u>		<u>8,145</u>		<u>3,811</u>	<u>88.0%</u>

Data based on Census 2000 and 2010 (Public Law 94-17) Summary File - Mississippi;

Legal Issues Impacting Redistricting

- Adherence to the one person, one vote requirement – everyone's vote must count the same.
- Section 2 of the Voting Rights Act – No voting practice or procedure can be discriminatory. At large election systems are frowned upon.
- Section 5 of the Voting Rights Act – No voting changes can have the purpose or effect of denying or abridging one's right to vote.
- Statutory requirements – Number of districts, polling place locations, etc.

Demographic, Geographic and Other Issues to Consider

■ Demographic Issues

- Racial composition of the City of Byram
- Geographic distribution of minorities
- Distribution and concentrations of all persons

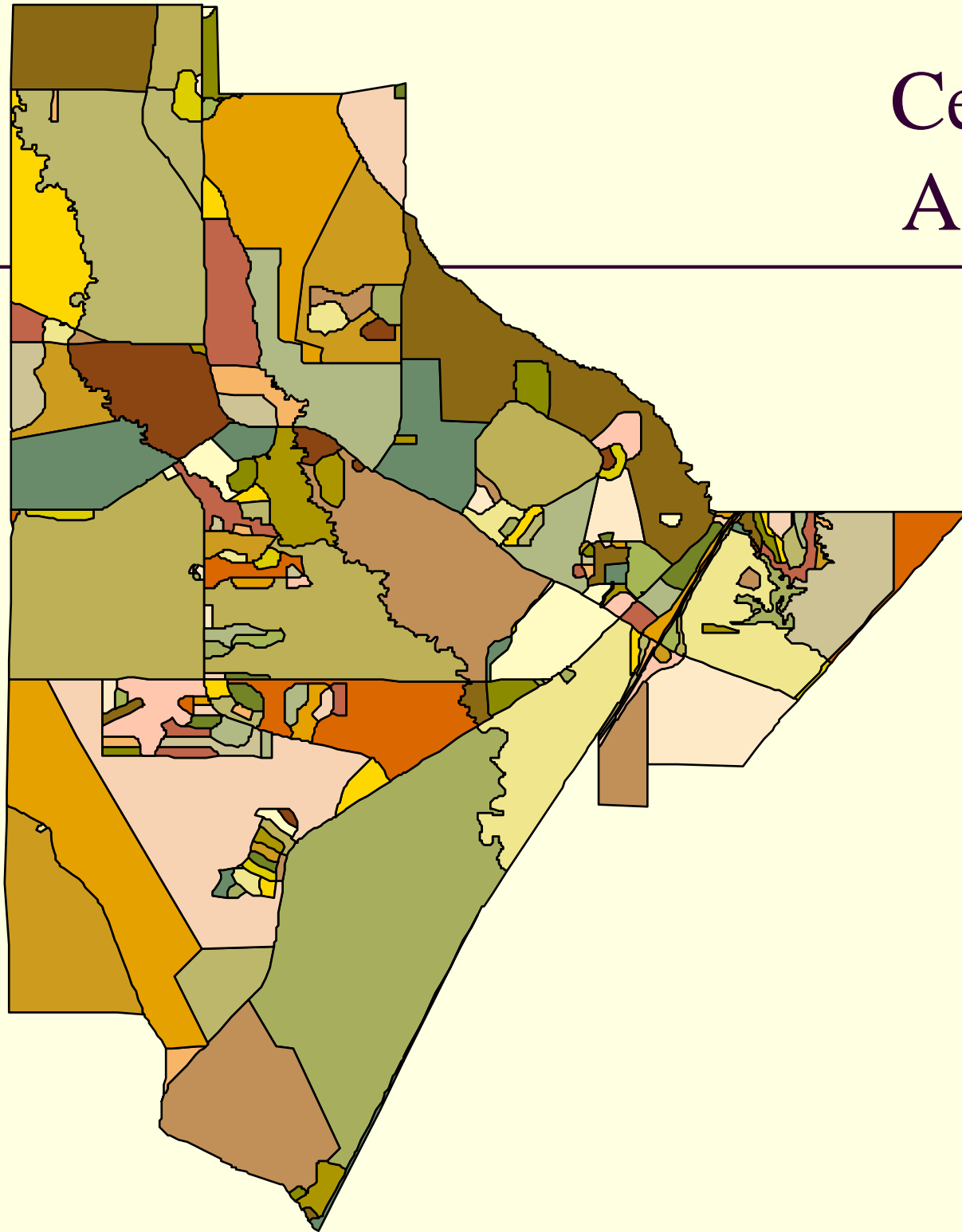
■ Geographic Issues

- Location of incumbents
- Avoid dividing neighborhoods/communities
- Utilize recognizable features for district boundaries
- Coordinate with County precincts and polling places

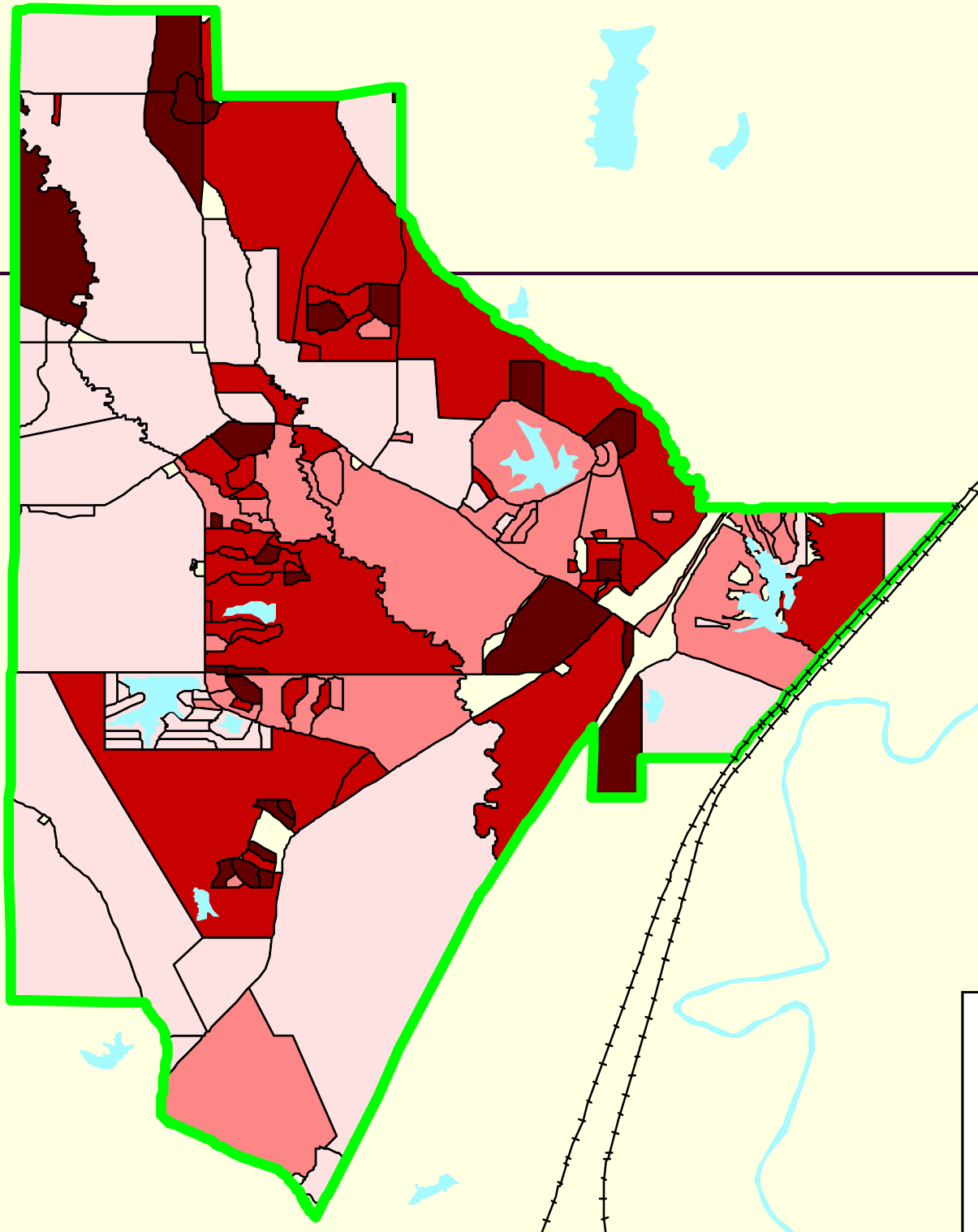
■ Other Issues

- Public input

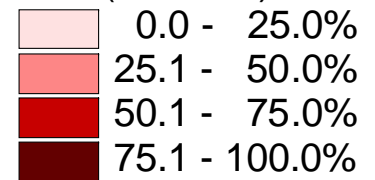
Census Block Arrangement



Minority Distribution



Minority Presence by Racial
Proportion (% Black):



Typical Redistricting Process

1. The necessity to redistrict arises (incorporation).
2. Public input before drawing plan(s) – Do citizens have a preference as to their representative, community, etc.
3. Prepare plan(s) – Initial plan is an effort to balance various interests
4. Public input after drawing plan(s) but before adoption – May lead to plan revision and subsequent public hearings
5. Board adopt the plan
6. Submit plan to Department of Justice
7. Department of Justice approval then implementation of plan

What is Unique About Byram?

1. Byram was incorporated by the Courts in June, 2009, just after the regular municipal election cycle.
2. As a function of law, when the court designated the municipal officers to serve until the next regular municipal election.
3. There is no provision in the law for Byram to voluntarily hold a special election, unless a vacancy occurred.
4. The next municipal election cycle begins in January, 2013. Newly elected officers will take office in July, 2013.
5. As such, Byram has no election history or constituent activity to aid in guiding the redistricting process.
6. Likewise, Byram does not have existing ward lines, precincts or polling places to utilize as a starting point in this process.